



SUPER HEAVY PULL TYPE DISC HAROWS
DHD-P2022, DHD-P2422, DHD-P2822, DHD-P3222
Operator Manual



YOU are responsible for the SAFE operation & maintenance of your Armstrong Ag disc.

1. Recommended HP requirements:

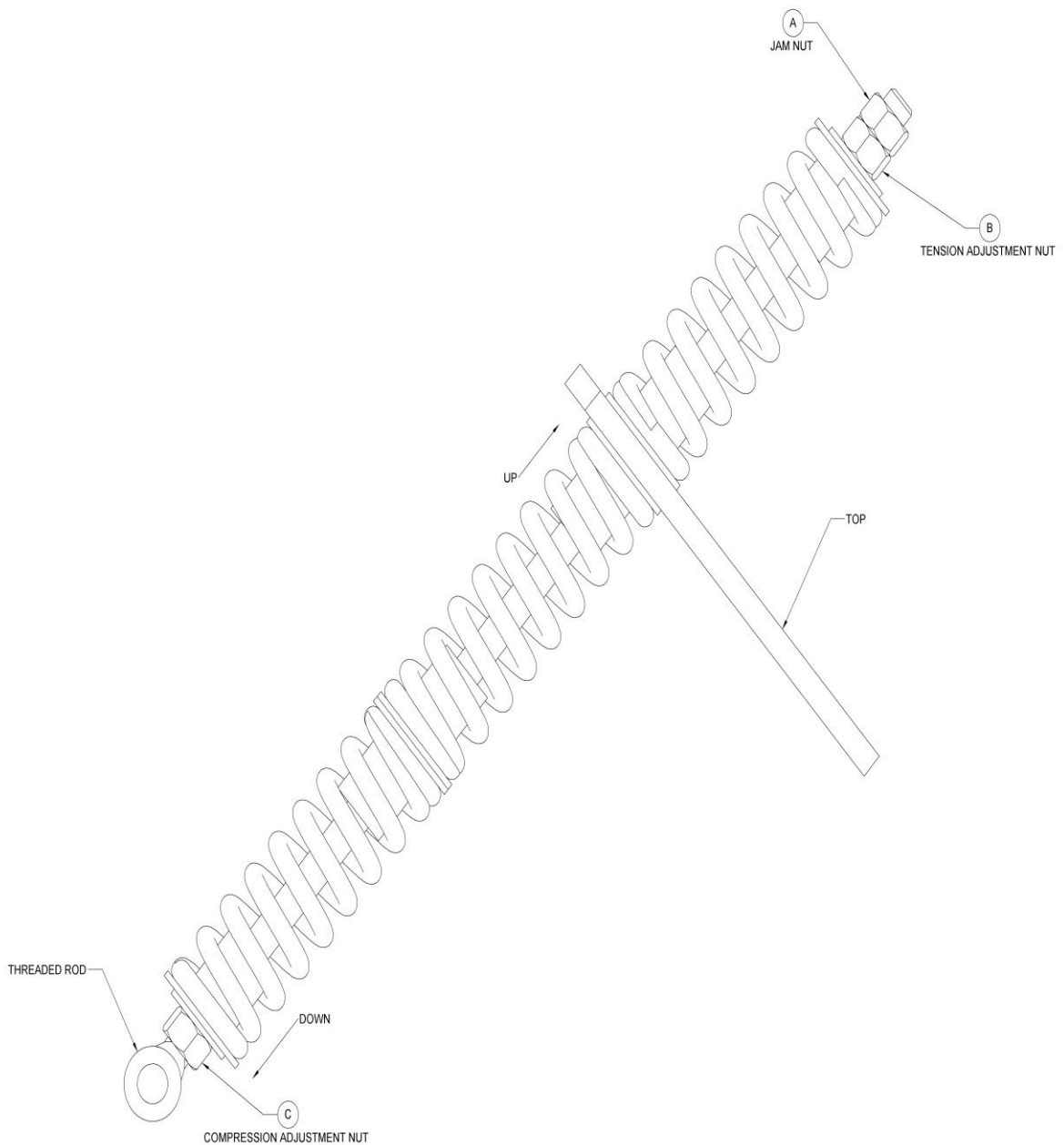
DHD-P 2422 - 75-100hp

DHD-P 2822 - 90-120hp

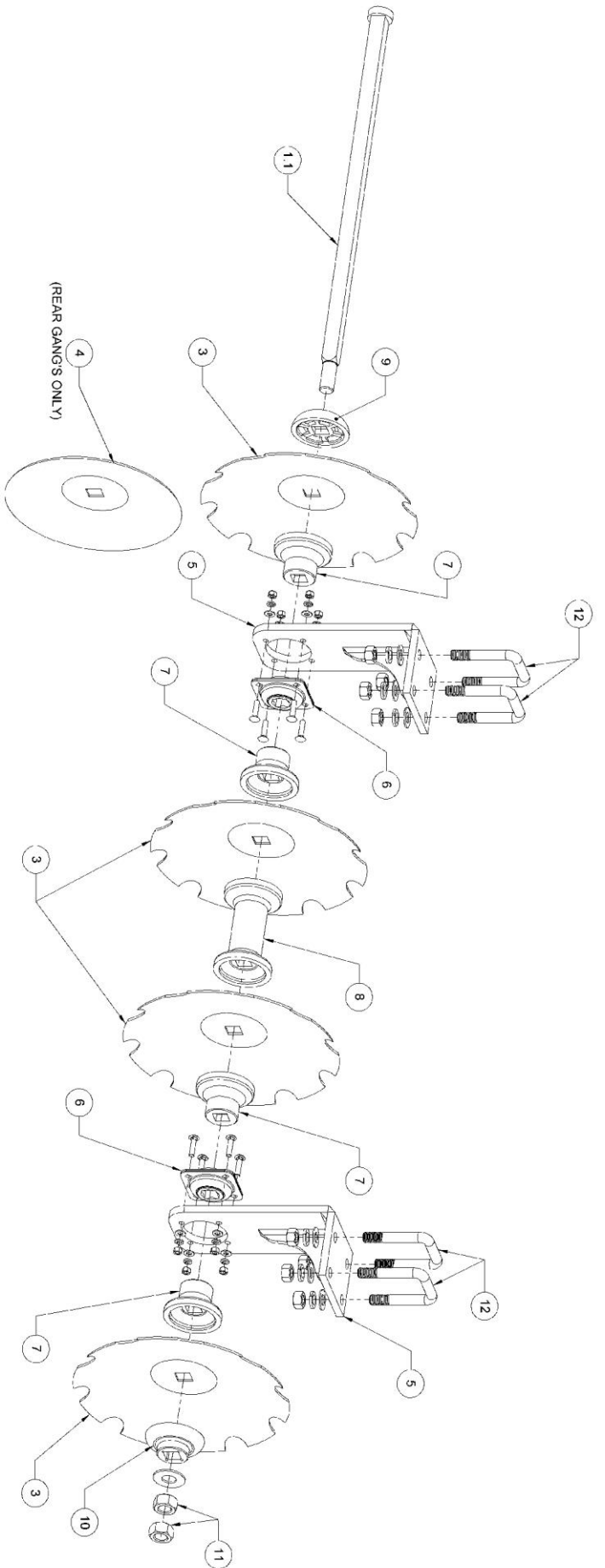
General operation & maintenance

- After attaching disc to tractor raise & reposition jack, raise 3pt. arms to assure no interference with tongue hitch.
- Attach hydraulic hoses & fully extend cylinder to raise the plow.
- Release cylinder block & lower plow to ground.
- Raise & lower several times.
- Restrictors (behind male coupler) are used to slow hydraulic flow; this reduces sudden impact jerks that may result in damage.
- If your tractor hydraulics are slow, you may remove & drill a larger hole in the restrictor plate.

- To properly adjust front to rear leveling, raise implement slightly off ground. Front gangs should be approximately 2in. higher than back gangs, to adjust see diagram below.
- To raise front gang loosen jam nut A from nut B. Turn A & B counter clockwise several rounds. Turn nut C several rounds in same direction as A & B. (All nuts should be turned equal rounds in the same direction.) After adjustment lock A & B tight.



- If disc shifts from side to side increase back gang pressure by using leveling spring adjustment.
 - There are 2 angle adjustments on each gang with easy pull pin (no wrenches required).
 - Adjusting the rear gang spacing may be required if a furrow or dike is left on plowed ground. This is caused by very slow or very fast travel speed.
 - Every 8 hrs.: inspect all bolts, nuts, U-bolts, & axle nuts, grease all bearings (8) (do not overgrease) & axle pivots (2).
1. Always raise plow when making turns.
 2. Do not turn sharp.
 3. Never drive over 25 mph.
 4. Use cylinder blocks when traveling on road.
 5. Use SME & lights as required by state law.
 6. Keep wire & hay string from wrapping (this will destroy bearing seals).
 7. Do Not stand on tires.
 8. Avoid discing in hard, dry soil; rocky fields; or soil with high moisture.
 9. Scrapers & Center Sweep are optional.
 10. Warranty claims must be directed to Armstrong Ag @ 1-800-880-0313. (12 months)



ITEM NO.	PART NUMBER	DESCRIPTION	Weight (LBS)
1.1	PDHD301A	1-1/2" SQ. Heavy Disc Axle - 42 1/2" Long	26.91
1.2	PDHD301B	1-1/2" SQ. Heavy Disc Axle - 51 1/2" Long	32.62
1.3	PDHD301C	1-1/2" SQ. Heavy Disc Axle - 61" Long	38.64
3	PDHD30222	22" x 1 1/2" SQ Axle Notched Disc	20.29
4	PDHD30218	18" x 1 1/2" SQ Axle Smooth Disc	14.15
5	PDHD309	Bearing Hanger	40.35
6	PDHD308	1 1/2" SQ. Flange Bearing	6.21
7	PDHD313	1 1/2" SQ. Axle Half Spool Spacer	7.52
8	PDHD314	1 1/2" SQ. Axle Full Spool Spacer	16.03
9	PDHD315	1 1/2" SQ Axle End Cap (Head Side)	6.30
10	PDHD316	1-1/2" SQ. End Cap (Nut End)	5.27
11	PDHD320	36mm Nut & Jam Nut	0.83
12	P1x4U	1-8 UNC-2A U-Bolt X 4"	3.776

PART NUMBER	DESCRIPTION	WEIGHT (LBS)
PDHD2022GF	COMPLETE DHD2022 DISC GANG WITH HANGERS (FRONT)	318
PDHD2022GR	COMPLETE DHD2022 DISC GANG WITH HANGERS (REAR)	318
PDHD2422GF	COMPLETE DHD2422 DISC GANG WITH HANGERS (FRONT)	344
PDHD2422GR	COMPLETE DHD2422 DISC GANG WITH HANGERS (REAR)	344
PDHD2822GF	COMPLETE DHD2822 DISC GANG WITH HANGERS (FRONT)	372
PDHD2822GR	COMPLETE DHD2822 DISC GANG WITH HANGERS (REAR)	372