

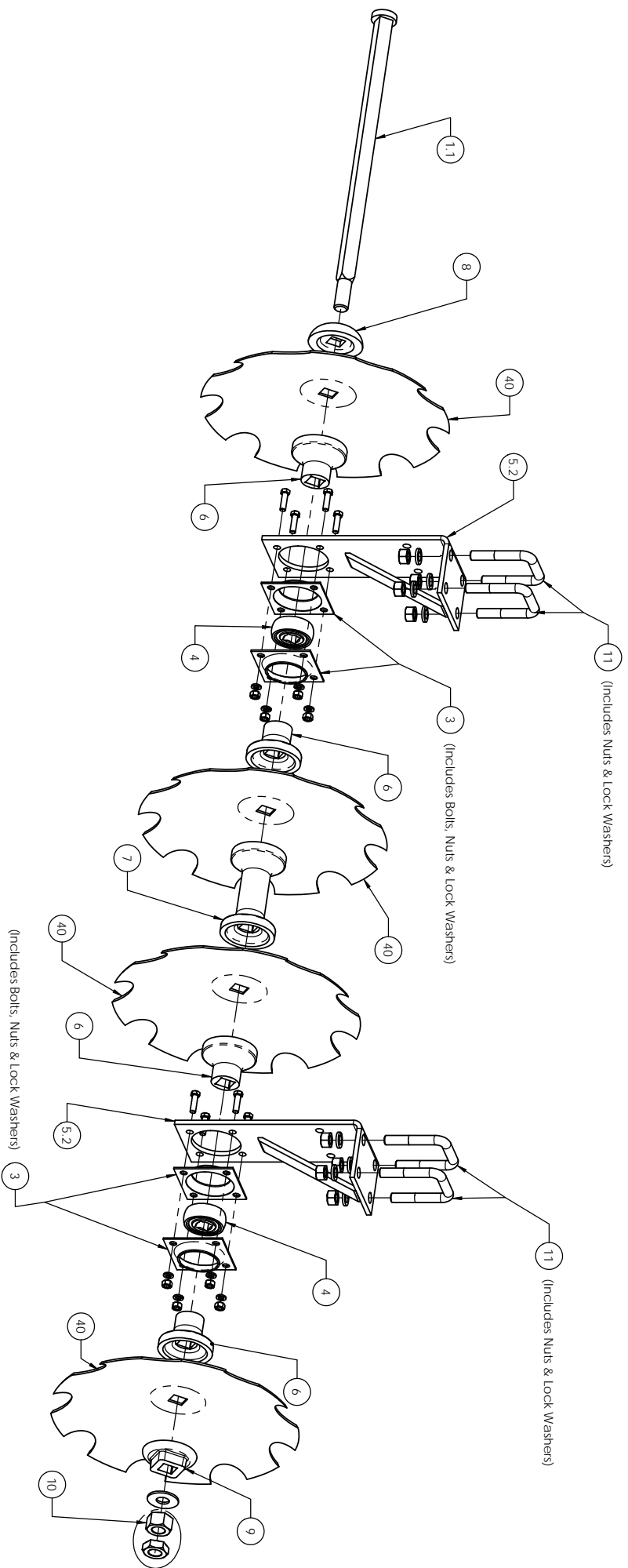


HEAVY DISC HAROWS  
HD1618, HD2020, HD2420  
Operator Manual



YOU are responsible for the SAFE operation and maintenance of your Armstrong Ag disc.

1. Use only a tractor with sufficient power (8hp/ft.).
2. Use front weights if required for stability.
3. Properly attach disc to tractor (lynch pins & stabilizer).
4. Level main frame side to side.
5. For leveling front to rear:  
With disc slightly above ground, rear gangs should be level or lower than front.
6. Check all bolts and nuts, frame and gang assemblies.
7. Warranty claims must be directed to Armstrong Ag  
@ 1-800-880-0313. (12 months)



ITEM NO.	PART NUMBER	DESCRIPTION	WEIGHT (LBS)
1.1	PHD201A	1-1/8" SQ. Heavy Disc Axle - 27" Long	9.688
1.2	PHD201B	1-1/8" SQ. Heavy Disc Axle - 34-1/2" Long	12.363
1.3	PHD201C	1-1/8" SQ. Heavy Disc Axle - 42-1/2" Long	15.216
2.1	PHD20218	18" x 1 1/8" SQ Axle Notched Disc	7.450
2.2	PHD20220	20" x 1 1/8" SQ Axle Notched Disc	12.662
3	PHD207	Bearing Flange w/ Hardware	0.685
4	PHD208	1-1/8" SQ. Sealed Bearing	2.123
5.1	PHD209A	HD1618 - BEARING HANGER (2 BOLT HOLE MOUNT - 14 3/4" OAL)	11.049
5.2	PHD209B	HD2020 & HD2420 - BEARING HANGER (4 BOLT HOLE MOUNT - 15 1/2" OAL)	12.822
6	PHD213	Half Spool Spacer	3.838
7	PHD214	Full Spool Spacer	7.161
8	PHD215	End Cap (Head Side)	2.857
9	PHD216	End Cap (Nut End)	2.513
10	PHD220	27mm Nut	0.632
11	PHD220	3/4" U-Bolt w/ Nuts & Washers	1.629

PART NUMBER	DESCRIPTION	WEIGHT (LBS)
PHD1618G	COMPLETE HD1618 DISC GANG WITH HANGERS	108
PHD2020G	COMPLETE HD2020 DISC GANG WITH HANGERS	161
PHD2420G	COMPLETE HD2420 DISC GANG WITH HANGERS	185